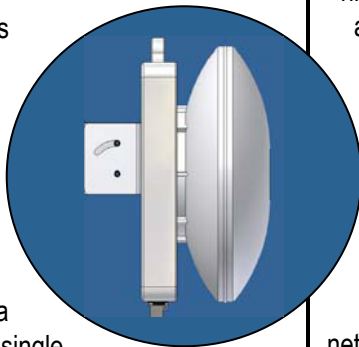




Data Sheet

The SnapLink product family of IP Radios is easy to install and turn up for data, VoIP and video transport. It uses standard 802.3 Ethernet protocol interfaces to provide 54 Mbps (Over The Air) at moderate distances and 11 Mbps (OTA) at longer distances of clear digital IP transport. Because SnapLink Radios operate in unlicensed and licensed millimeter bands (20 – 40 GHz), they provide Interference Free service.

SnapLink Radios are a "Snap" to install with its single unit design that combines the radio and antenna in a rugged mechanical package. A single cable provides both data and power. The units automatically acquire each other as soon as power is applied. Because SnapLink Radios uses a flexible, low cost 2" to 4" pole - mounting system, installation is a "Snap".



SnapLink Radios are available in the US at the licensed free or licensed 24 GHz bands. They are also available in the licensed 38/39 GHz bands. These bands give interference free service for high reliability and signal assurance. Additionally,

SnapLink Radios will adjust data rates in severe weather conditions to keep the link and the service alive.

SnapLink Radios are ideal for IP backhaul, internet network extensions and local bypass. This cost effective radio is made for corporate, private and government network operators interested in clear wireless data.

Features

- Cost Effective IP Radio
- 54 Mbps moderate range – 11 Mbps up to 5 miles
- Operates at Interference Free bands (Licensed or Unlicensed)
- International Bands Available
- A "Snap" to : Install : Turn Up : Maintain
- "Plug and Play" Ethernet Interfaces

ALTIVUS COMMUNICATIONS
For more information, call 410-667-1638

snaplink 

Specifications subject to change without notice

SnapLink c/o STS 823 Hollywood Blvd., Crownsville Maryland 21032

Phone: 410-923-8622 • Fax: 410-923-8623 • email: sward@shieldtechsystems.com

| Item | Specification | Comments |
|-----------------------------------|--|---|
| Air Interface | | |
| Frequency * | 24 GHz licensed and unlicensed and 28/38 GHz licensed | Other international frequencies available |
| Modulation | DQPSK | |
| Spread Spectrum | OFDM / Direct Sequence Spread Spectrum | |
| Transmit Power | 5 dBm nominal into antenna | |
| Point to point | | |
| Antenna Type | 12" reflector antenna | |
| Antenna Gain | 34.5 dBm typical at millimeter wave | 12" antenna @ 24 GHz |
| Antenna Beam Width | 2.6° typical, 3dB beam width millimeter wave | 12" antenna @ 24 GHz |
| Network Interface | | |
| Network Topology | Pt. to Pt. | |
| Over Air Data Rate | 54 to 11 Mbps @ error rate of 10^{-6} or better | Distance dependent |
| Effective Data Rate | 27 to 5 Mbps @ error rate of 10^{-6} or better | Distance dependent |
| Cable | Category 5 | |
| Connector | RJ-45 female modular jack | Data and DC power |
| Interface | 10/100BaseT via AC power adapter | |
| Range | | |
| Range millimeter wave | 8 km (5 miles) in clear air at 11 Mbps 1-3 km (.5- 3 miles) in clear air at 54 Mbps | 12" antenna |
| Physical & Power (POE) | | |
| Weight | 2 kg typical | Including the mount |
| Mounting | Pipe or wall mount | |
| Grounding | 8 mm bolt on the transceiver for grounding | |
| DC voltage | +20V _{DC} to +56V _{DC} into the receiver | |
| Power Consumption | 10 Watts nominal | |
| Dimensions | 304mm (12") x 304 mm (12") x 51mm (2") | Excluding antenna |
| Environmental | | |
| Sealing | All Weather enclosure | |
| Operating Temperature | -35° to + 55° C | |

Specifications at +25° C unless otherwise specified

* SnapLink can be made in any frequency band between 20-40 GHz



For more information, call 410-667-1638

Specifications subject to change without notice

SnapLink c/o STS 823 Hollywood Blvd., Crownsville Maryland 21032

Phone: 410-923-8622 • Fax: 410-923-8623 • email: sward@shieldtechsystems.com